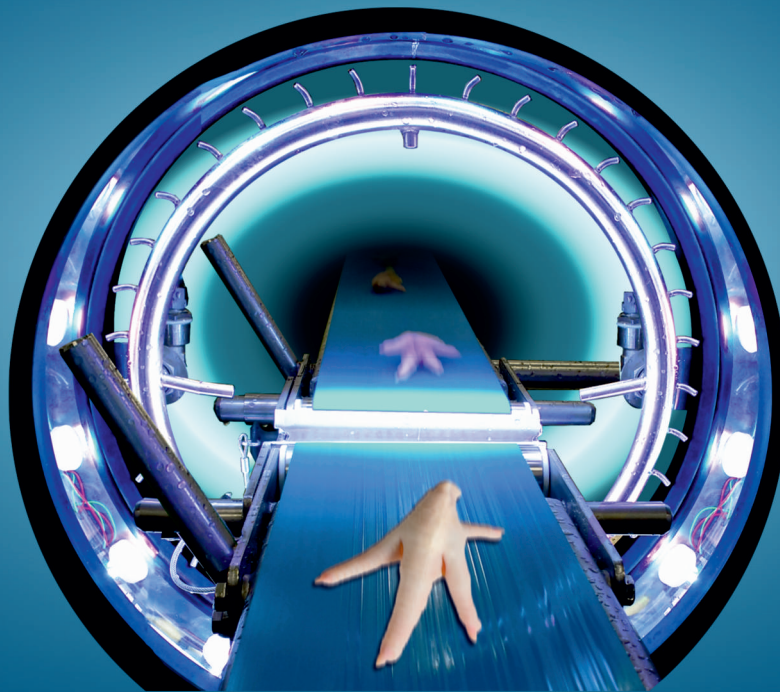


ELECTRONIC  
SORTING

# Inline



efficiency all along the line



*made by*

▶ ▶ ▶ ▶ ▶ ▶ **select**



## Grading Characteristics

for instance classification of:

- ... color values of defect areas or spots
- ... various sizes of defect areas
- ... various sizes and weights of products
- ... various lengths and thickness of products
- ... bent growth and break of products

## Application Examples



Poultry (paws)



Poultry (wings)



Meat (pork)



Sausage (cabanossi)



Snails

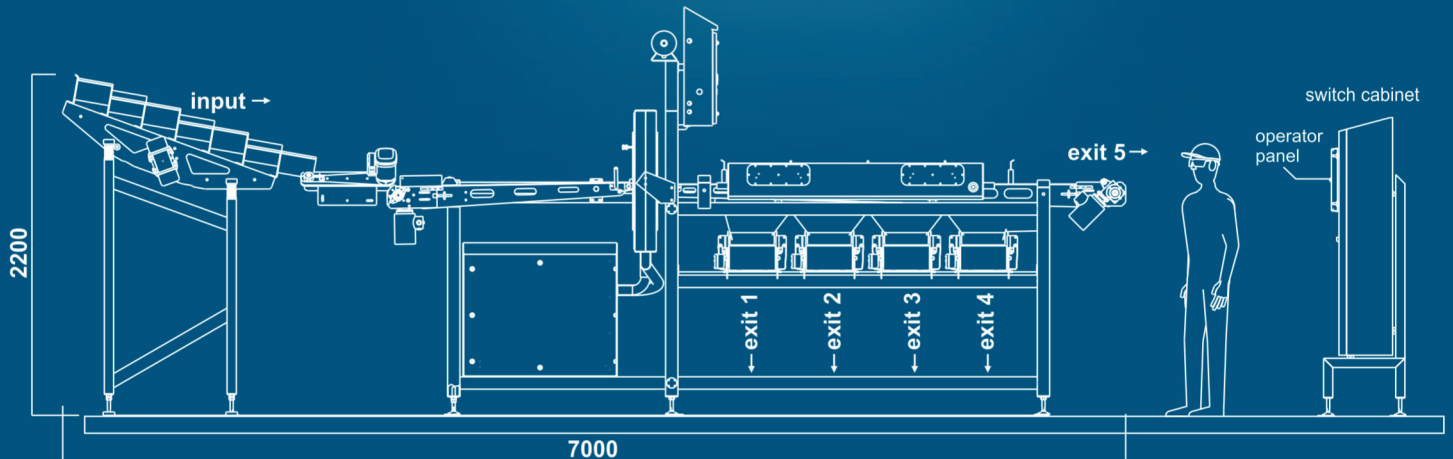


Shrimps



## Capacity

- depends on size and kind of product and on the number of parallel installed grading lines



## Connections

Compressed Air

- for sorting and automatic cleaning function
- 1" conduit diameter

Water

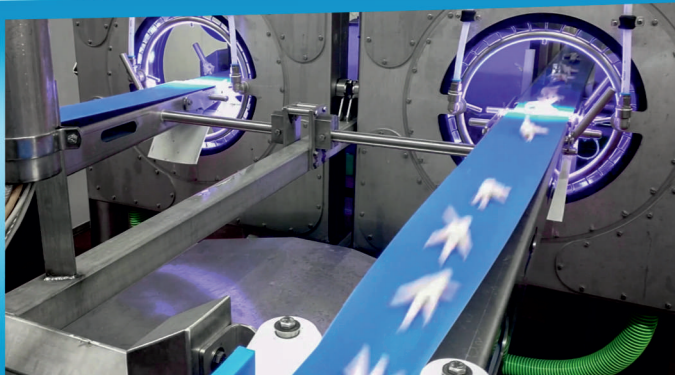
- for automatic cleaning function
- 3/4" conduit diameter

Electrics:

- 400V / 50Hz / 1,5kW
- 3P + N + PE

## Everything already tuned up

- delivery the grading machine in fully assembled state
- therefore a fast and easy implementation into pre-existing production lines is possible





## Full Control in Full HD



- modern 21" touch panel with *Full HD* display as the central interface for the operator
- easy and fast entrance in electronic sorting with professional software
- live image function for a realistic image of the scanned object as well as a coloured marking of defects
- operator software always in the national language
- extensive control and statistic functions

## Safety



- software updates and Remote Service via Internet by military-grade encryption
- access by authenticated SELECT service agents only

## Maintenance



- robust and low maintenance
- modern *Hygienic-Design*
- programmable automatic cleaning function
- tool-free cleaning of the sorting machine

## Ejector



- serially arranged compressed air nozzles
- separate selectable
- short response time
- high cadence
- number expandable
- automatic adjustment of grading pressure depending on the grading program

## Statistics



- retrieval of statistic data from a database
- sending the data by e-mail or access via Ethernet
- optional

## Language Switch



- switch the user language during operation by one click of the operator
- optional

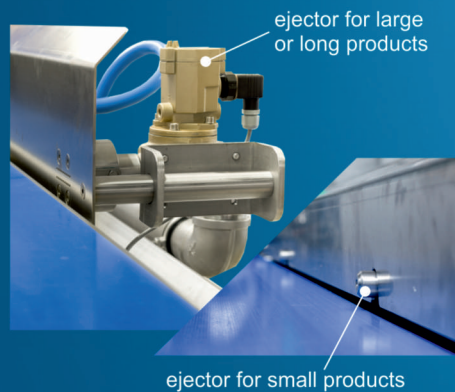
## 360° Scan

- scanning of the total product surface



## Ejector variants

- various ejector variants are available for choose
- the product type determines the size of the valve and the nozzle.





# select Heard of us? You're not alone.

Because our machines do a great job.



## Premium - Sorting Machines

We are an excellent choice when it comes to sorting food along the entire process chain. We develop and manufacture machines that operate on the principle of optoelectronic sorting.

## The word is getting around.

We are proud, to have turned many prospects into loyal customers around the world.

## Everything under one roof...

that's the perfect way to work efficiently. The integration of *design, mechanics, electronics, software, and service* under one roof ensures clear, fast communication and flexibility. This avoids errors, enables quick implementation of improvements, and guarantees consistently high quality.

## Optoelectronic Sorting - We know something about that!

Our expertise makes us the best choice for the food industry.



Potatoes & Vegetables



Convenience Food



Seafood



Meat & Sausages



Non Food

SELECT – Ingenieurgesellschaft für Optoelektronik, Bilderkennung und Qualitätsprüfung mbH



Mühlauer Straße 18  
09232 Hartmannsdorf  
Germany



<https://select.gmbh>



+49 3722 73110



[info@agroselector.de](mailto:info@agroselector.de)

